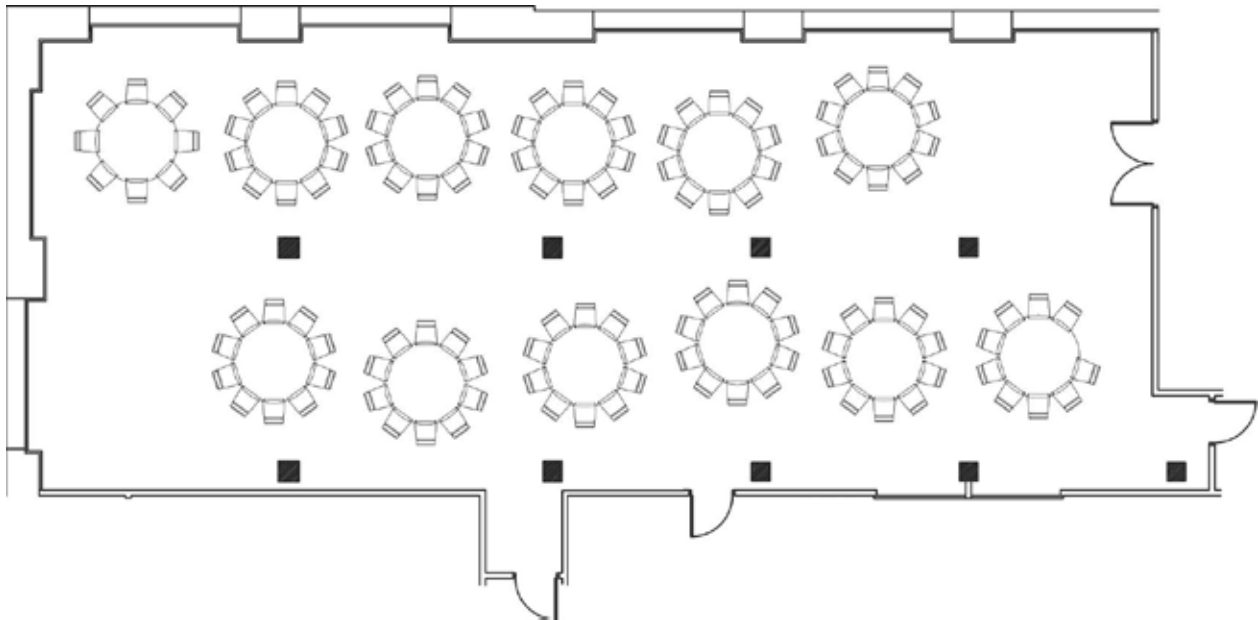




THE IRON HORSE  
HOTEL™



# THE GALLERY



**A bright, open glass staircase leads you down to our lower level special event space, The Gallery.**

A spacious pre-function area offers your guests their own private lobby. Perfect for cocktail receptions or as a meet-and-greet staging area, the space is complete with custom artwork and original paintings. The Iron Horse Hotel's Gallery is the ideal space for a corporate event, meeting or social gathering. Old pine timbers, original fire doors, and a rotating collection of decorative antique mirrors and works by local artists make for a remarkable space of 2,500 sq. ft.

The room can be configured in a variety of settings including banquet, U-shape, classroom or reception. Capacity is based on your individual room configuration, which we custom design to meet your needs.

**MAX CAPACITY**

Sit Down: 130  
Reception: 200

**DIMENSIONS**

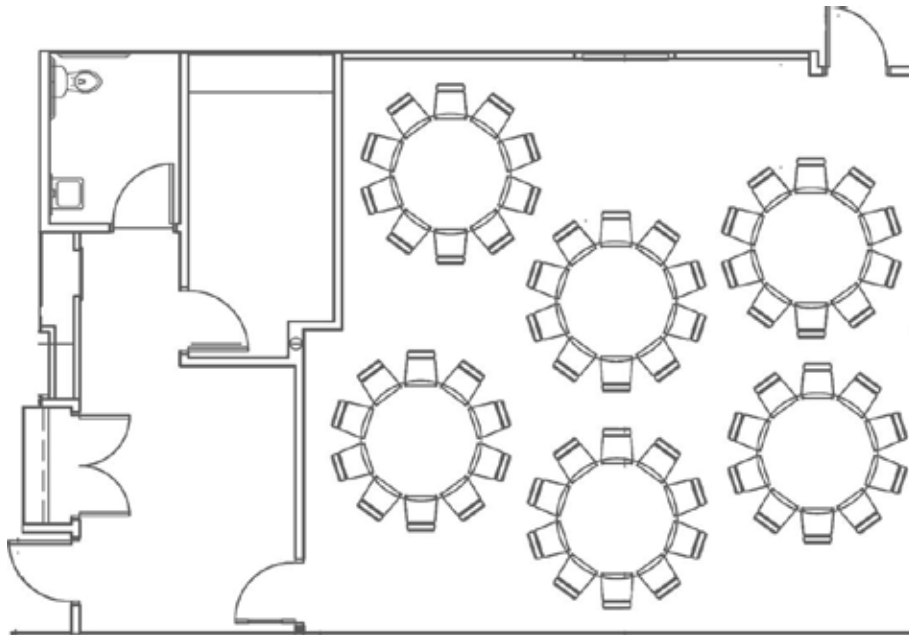
2500 Sq.Ft.. (80' x 30')  
9' 6" Ceiling Height

**OTHER**

Available Pre-Function Space  
ADA Accessible



# THE LOFT



Custom artwork, wrought iron chandeliers and exposed Cream City brick create a warm backdrop – perfect for your next cocktail reception, business dinner, corporate workshop or game-day celebration.

Our state-of-the-art 70” LCD smart board enables interactive presentations, digital “write-on” screen capabilities, and Blu-ray and DVD screening. Other features include surround sound, an iPod docking station, wireless microphone and high-definition cable hookup. A pre-function area allows space for a private bar and reception area, and offers a coat closet and private restroom. The Loft accommodates 60 sit-down and 70 reception-style, as well as 50 classroom and 80 theater-style.

The room can be configured in a variety of settings including banquet, U-shape, classroom or reception. Capacity is based on your individual room configuration, which we custom design to meet your needs.

**MAX CAPACITY**

Sit Down: 60

Reception: 70

**DIMENSIONS**

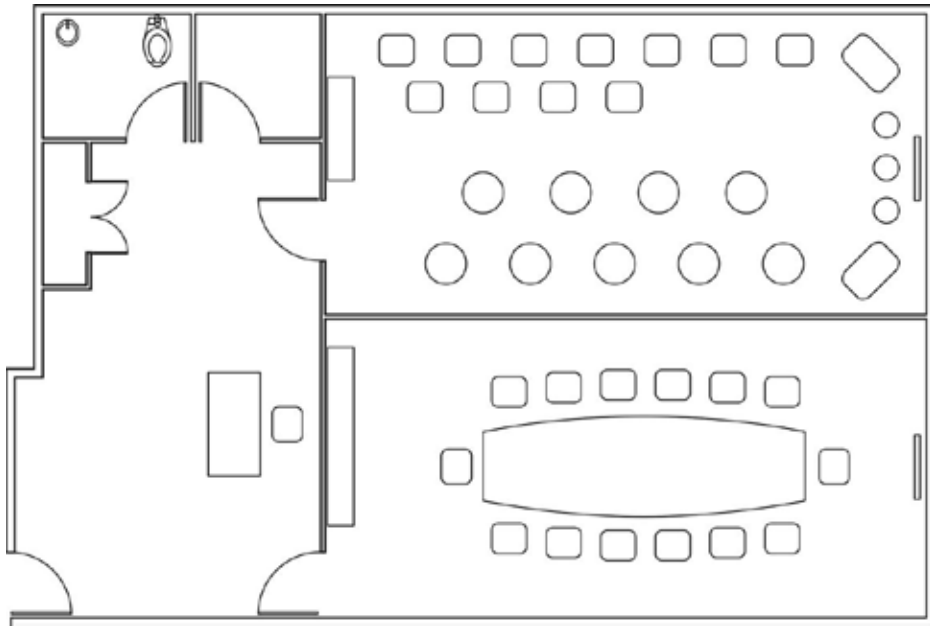
840 Sq.Ft.. (29' x 29')

**OTHER**

Available Pre-Function Space

ADA Accessible

# THE SANDBOX & WAR ROOM



<< SANDBOX

<< WAR ROOM

## In need of an exceptional off-site boardroom?

The War Room offers privacy and amenities. Get down to business in leather swivel-tilt seating at a custom 12-foot conference table. The adjacent Sand Box offers creative space perfect for breakout sessions and dining.

Each space features Cream City brick walls, high ceilings and an LCD flat screen TV for full A/V use.

The 5th Floor Executive Suite is complete with a reception area, private restroom and coat closet.

The room can be configured in a variety of settings including banquet, U-shape, classroom or reception. Capacity is based on your individual room configuration, which we custom design to meet your needs.

### WAR ROOM MAX CAPACITY

Sit Down: 16

Reception: 20

### SAND BOX MAX CAPACITY

Sit Down: 20

Reception: 30

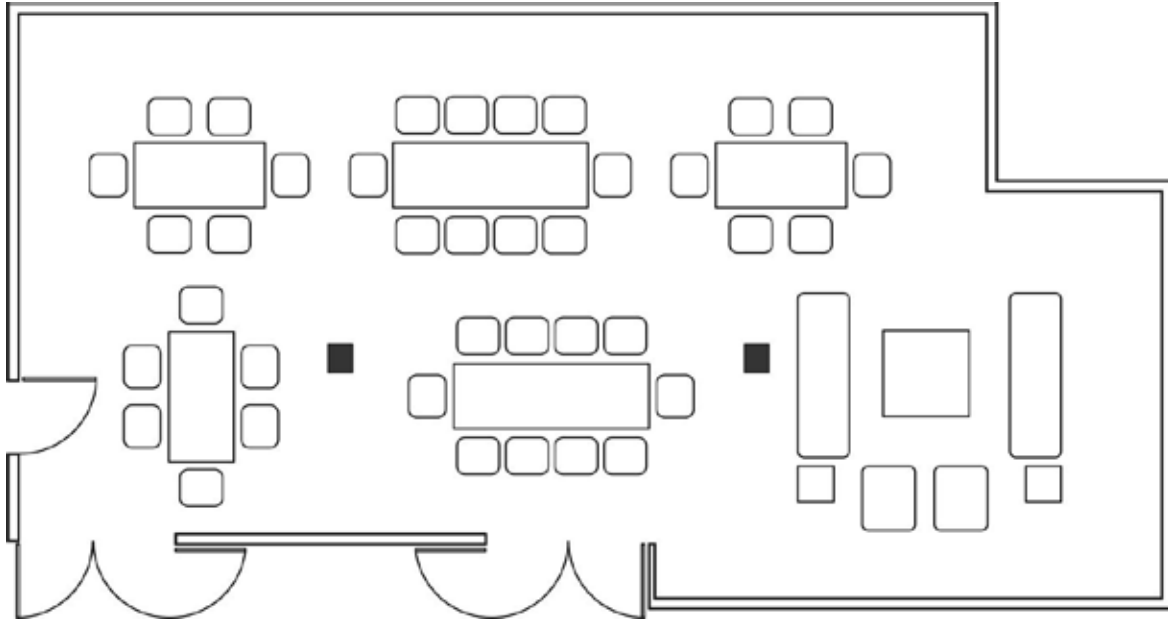
### DIMENSIONS

406 Sq.Ft.. (29' x 14')

10 ft. Ceiling Height



# THE LIBRARY



**Treat your guests to a dinner or reception in our warm, intimate Library.**

From wine tastings and parties to corporate dinners and receptions, The Library is an impressive venue for small groups from 38 seated to 80 reception style. Setting a perfect tone for corporate meetings, The Library features a warm and welcoming fireplace, antique lighting, seating at Bank of London chairs and an expanse of books.

The room can be configured in a variety of settings including banquet, U-shape, classroom or reception. Capacity is based on your individual room configuration, which we custom design to meet your needs.

**MAX CAPACITY**

Sit Down: 38  
Reception: 80

**DIMENSIONS**

1272 Sq.Ft.. (24 'x 53')  
10' 6" Ceiling Height

**OTHER**

Working Fireplace